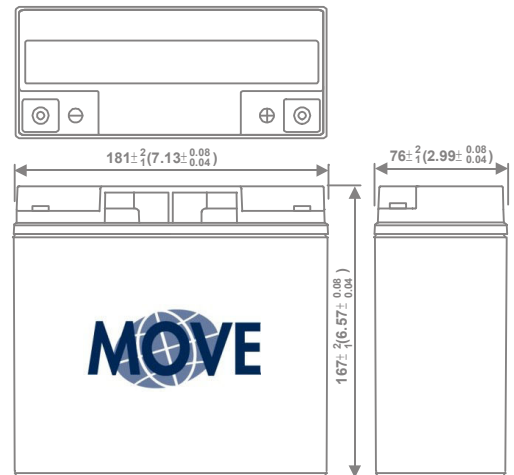
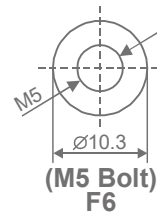


APPLICATIONS

Powerchairs / home mobility equipment
 Scooters, 3- and 4 wheels
 Toys for children
 Lifts (stairs / bathrooms)
 Personal Carriers
 Utility Vehicles

SPECIFICATIONS

| | | |
|--|-----------------|--------|
| Nominal Voltage | 12V | |
| Nominal capacity @20 hour rate | 20Ah | |
| Capacity at 25°C | 10 hour rate | 18Ah |
| | 5 hour rate | 16,5Ah |
| | 1 hour rate | 11Ah |
| Shelf time @20°C up to 70% | in months | 9 |
| Internal resistance (at 1 KHz) | approx. 10 mΩ | |
| Operating temperature for (dis)charge | -15°C to + 40°C | |



DIMENSIONS

| | |
|---------------------------------------|------------------------|
| Dimensions LxWxH (T) in mm | 181x76x167 (167) |
| Weight | 5,9kg (±2%) |
| Separator | AGM, Glass Mat |
| Case and cover | ABS (UL94-V0 optional) |
| Terminal | M5 Bolt |
| Torque setting (recommended) | M5: 2,9 Nm |
| Maximum allowable torque value | M5: 4,9 Nm |

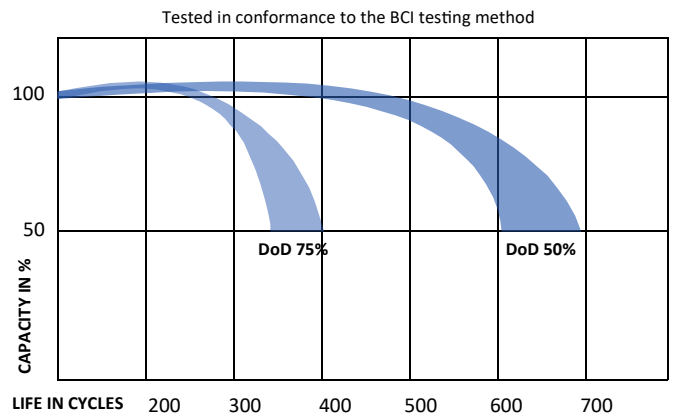
CHARGING

Charging Voltage cycle use 14,4 to 15 Volt
 Float charge Voltage 13,5 to 13,8 Volt
 Charging current, minimum 2A - maximum 3A

CYCLE LIFE

To maximize the cycle life of the battery, we recommend to charge the battery fully after use. The total life of the battery, is very dependant on the correct charge and depth of discharge per cycle.

BATTERY LIFE UNDER CYCLIC USE



* Cycle life is measured with a discharge current 0,2C, charged 16h and rest capacity of 2/3 Cn